

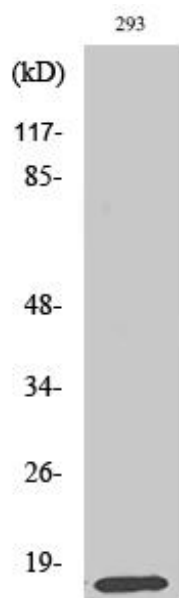


MRP-L14 Polyclonal Antibody

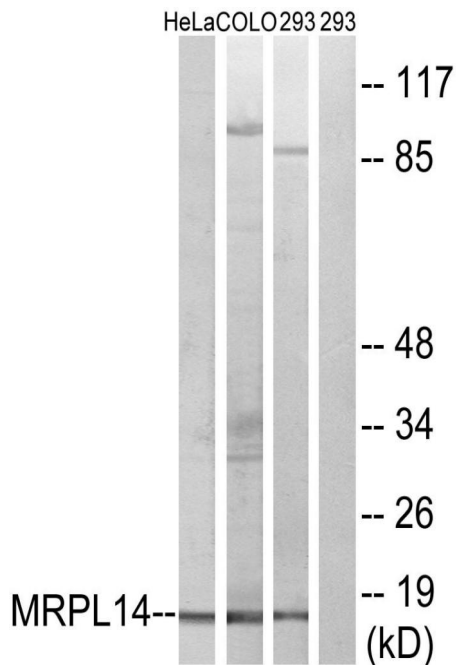
Catalog No	YP-Ab-03977
Isotype	IgG
Reactivity	Human;Mouse;Rat
Applications	WB;IHC;IF;ELISA
Gene Name	MRPL14
Protein Name	39S ribosomal protein L14 mitochondrial
Immunogen	The antiserum was produced against synthesized peptide derived from human MRPL14. AA range:96-145
Specificity	MRP-L14 Polyclonal Antibody detects endogenous levels of MRP-L14 protein.
Formulation	Liquid in PBS containing 50% glycerol, 0.5% BSA and 0.02% sodium azide.
Source	Polyclonal, Rabbit,IgG
Purification	The antibody was affinity-purified from rabbit antiserum by affinity-chromatography using epitope-specific immunogen.
Dilution	WB: 1/500 - 1/2000. IHC: 1/100 - 1/300. ELISA: 1/20000.. IF 1:50-200
Concentration	1 mg/ml
Purity	≥90%
Storage Stability	-20°C/1 year
Synonyms	MRPL14; MRPL32; RPML32; 39S ribosomal protein L14; mitochondrial; L14mt; MRP-L14; 39S ribosomal protein L32, mitochondrial; L32mt; MRP-L32
Observed Band	16kD
Cell Pathway	Mitochondrion .
Tissue Specificity	Pancreas,
Function	similarity:Belongs to the ribosomal protein L14P family.,
Background	This nuclear gene encodes a protein component of the 39S subunit of the mitochondrial ribosome. A pseudogene of this gene is found on chromosome 17. [provided by RefSeq, Jan 2016],
matters needing attention	Avoid repeated freezing and thawing!
Usage suggestions	This product can be used in immunological reaction related experiments. For more information, please consult technical personnel.



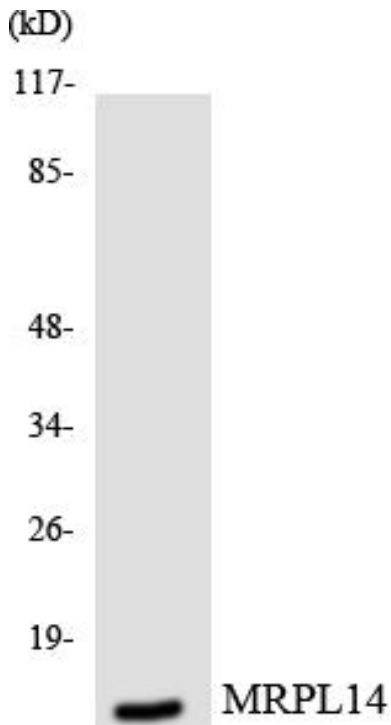
Products Images



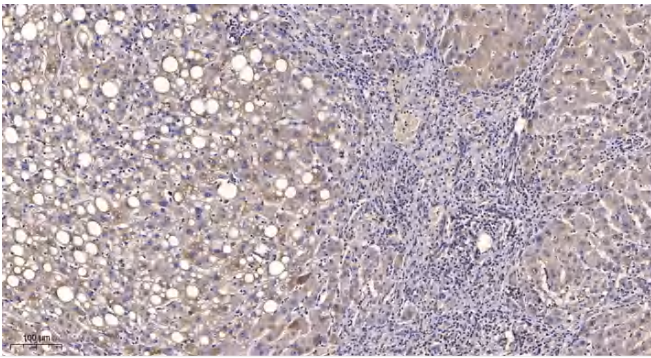
Western Blot analysis of various cells using MRP-L14 Polyclonal Antibody diluted at 1:2000



Western blot analysis of lysates from 293, HeLa, and COLO cells, using MRPL14 Antibody. The lane on the right is blocked with the synthesized peptide.



Western blot analysis of the lysates from HUVECcells using MRPL14 antibody.



Immunohistochemical analysis of paraffin-embedded human liver cancer. 1, Antibody was diluted at 1:200(4° overnight). 2, Tris-EDTA,pH9.0 was used for antigen retrieval. 3,Secondary antibody was diluted at 1:200(room temperature, 45min).